



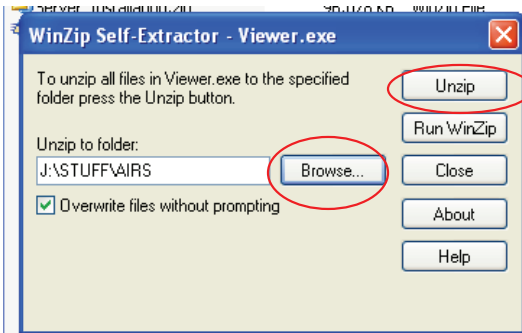
## ERA Installation Instructions

AIDS INSTITUTE NEW YORK STATE DEPARTMENT OF HEALTH

### First time network installation

**(Steps 1- 4 only need to be performed for the first install of ERA on the network.)**

1. Run the **ERA Install.exe** file, click **Browse** and navigate to your AIRS root directory.
2. Click Unzip.



3. A message will appear indicating that a certain number of files were unzipped successfully. Click **Ok**.
4. Click on **Close** or the "X" in the top right hand corner to close this window.

### Workstation Setup

**(Perform the following from each PC that will use ERA)**

1. Navigate to the AIRS\Viewer folder.
2. Double click on the **setup.exe** file.
3. Follow the instruction until the installation has been completed.
4. If you encounter and error during the workstation setup click ignore and continue on with the installation. This will not cause the application to not run.

**Note: ERA=External Reporting Application**